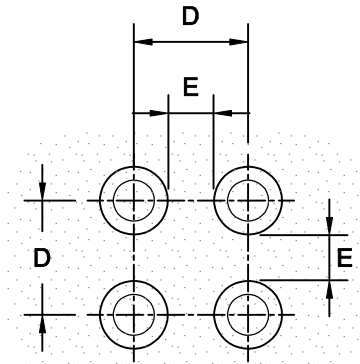


PROVIDE 6" to 8" SETBACK FROM CURB FACE.

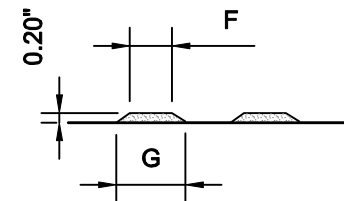
TRUNCATED DOMES

EDGE OF DETECTABLE WARNING INSTALLATION TO MATCH RADIUS OF CURB.



PLAN

	MIN.	MAX.
D	1.60"	2.40"
E	.65"	1.50"
F	.45"	.80"
G	.90"	1.40"



ELEVATION

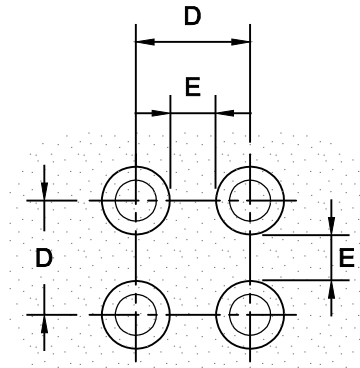
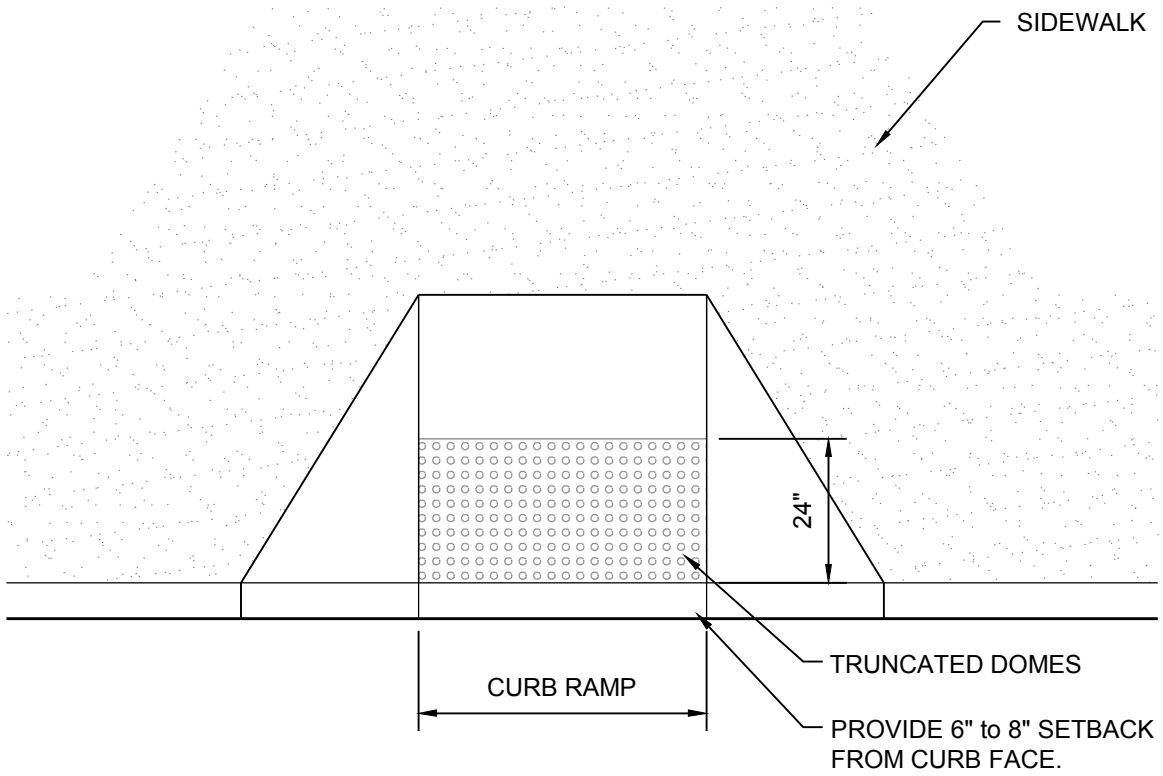
TRUNCATED DOME  
DETECTABLE  
WARNING DETAIL

## Detectable Warning at Blended Curb

Truncated domes and all related installed surfaces to be installed according to manufacturers specifications. All detectable warning surface installations shall be at minimum, *at least* as non skid as the surrounding pedestrian surfaces.

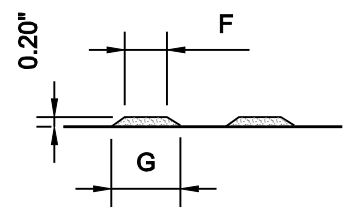
As manufactured by Vanguard ADA Systems of America, or equivalent.

[www.VanguardOnline.com](http://www.VanguardOnline.com)



PLAN

	MIN.	MAX.
D	1.60"	2.40"
E	.65"	1.50"
F	.45"	.80"
G	.90"	1.40"



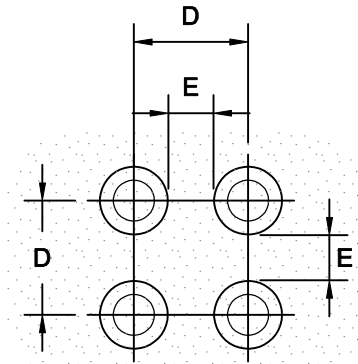
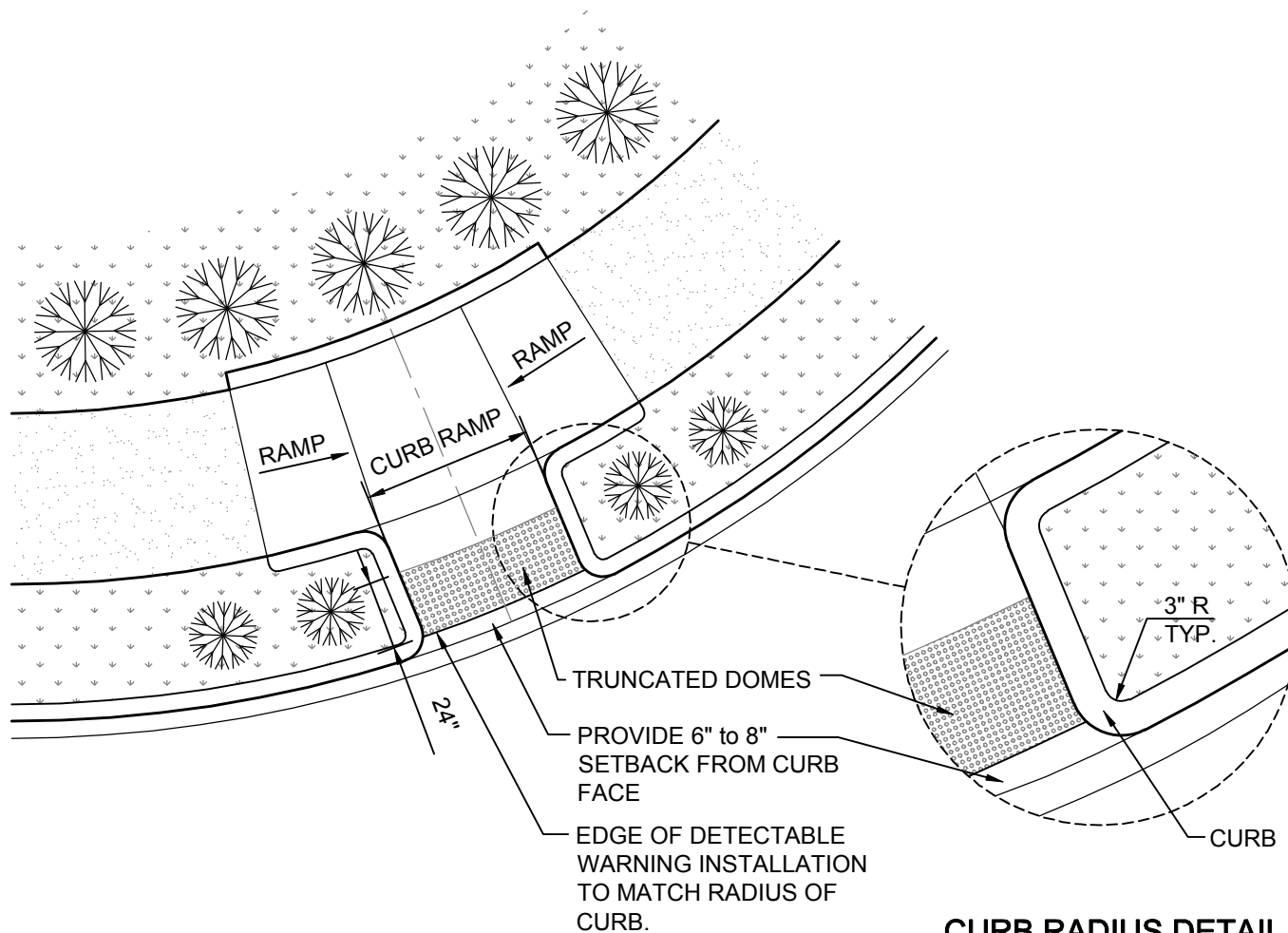
ELEVATION

**TRUNCATED DOME  
DETECTABLE  
WARNING DETAIL**

## Detectable Warning at Curb Ramp

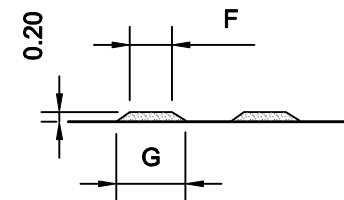
Truncated domes and all related installed surfaces to be installed according to manufacturers specifications. All detectable warning surface installations shall be at minimum, *at least* as non skid as the surrounding pedestrian surfaces.

As manufactured by Vanguard ADA Systems of America, or equivalent.  
[www.VanguardOnline.com](http://www.VanguardOnline.com)



PLAN

	MIN.	MAX.
D	1.60"	2.40"
E	.65"	1.50"
F	.45"	.80"
G	.90"	1.40"



ELEVATION

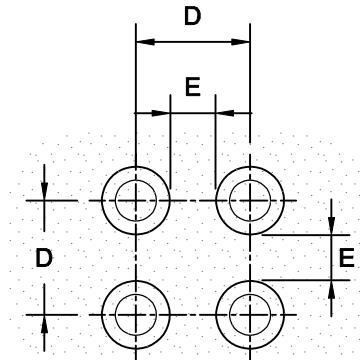
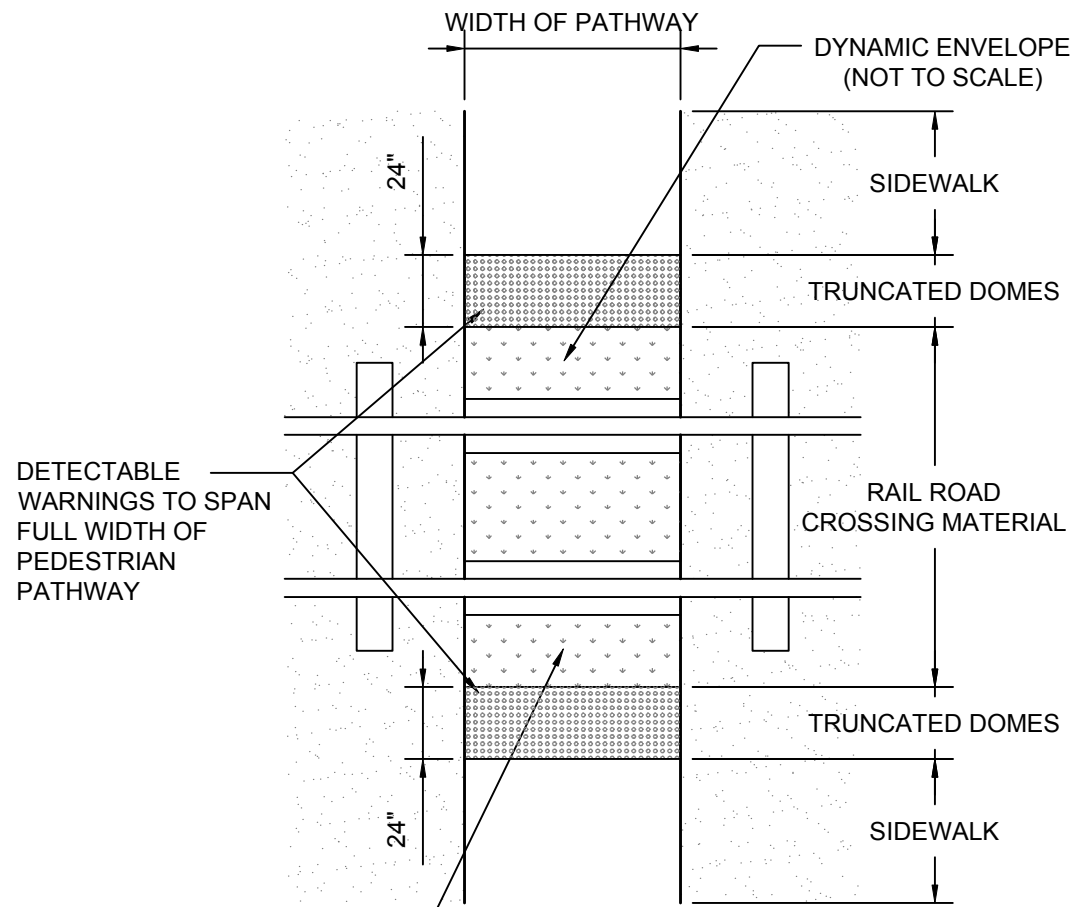
TRUNCATED DOME  
DETECTABLE  
WARNING DETAIL

CURB RADIUS DETAIL

## Curb Ramp with Detectable Warnings

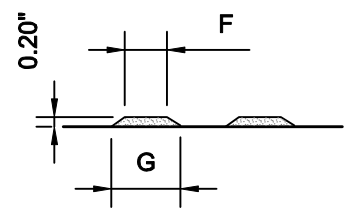
Truncated domes and all related installed surfaces to be installed according to manufacturers specifications. All detectable warning surface installations shall be at minimum, *at least* as non skid as the surrounding pedestrian surfaces.

As manufactured by Vanguard ADA Systems of America, or equivalent.  
[www.VanguardOnline.com](http://www.VanguardOnline.com)



PLAN

	MIN.	MAX.
D	1.60"	2.40"
E	.65"	1.50"
F	.45"	.80"
G	.90"	1.40"



ELEVATION

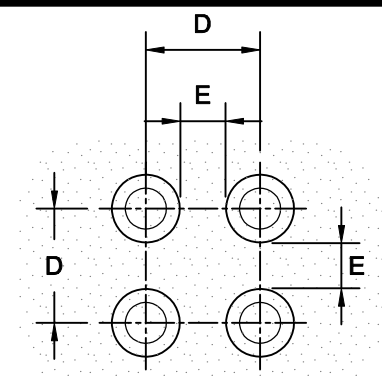
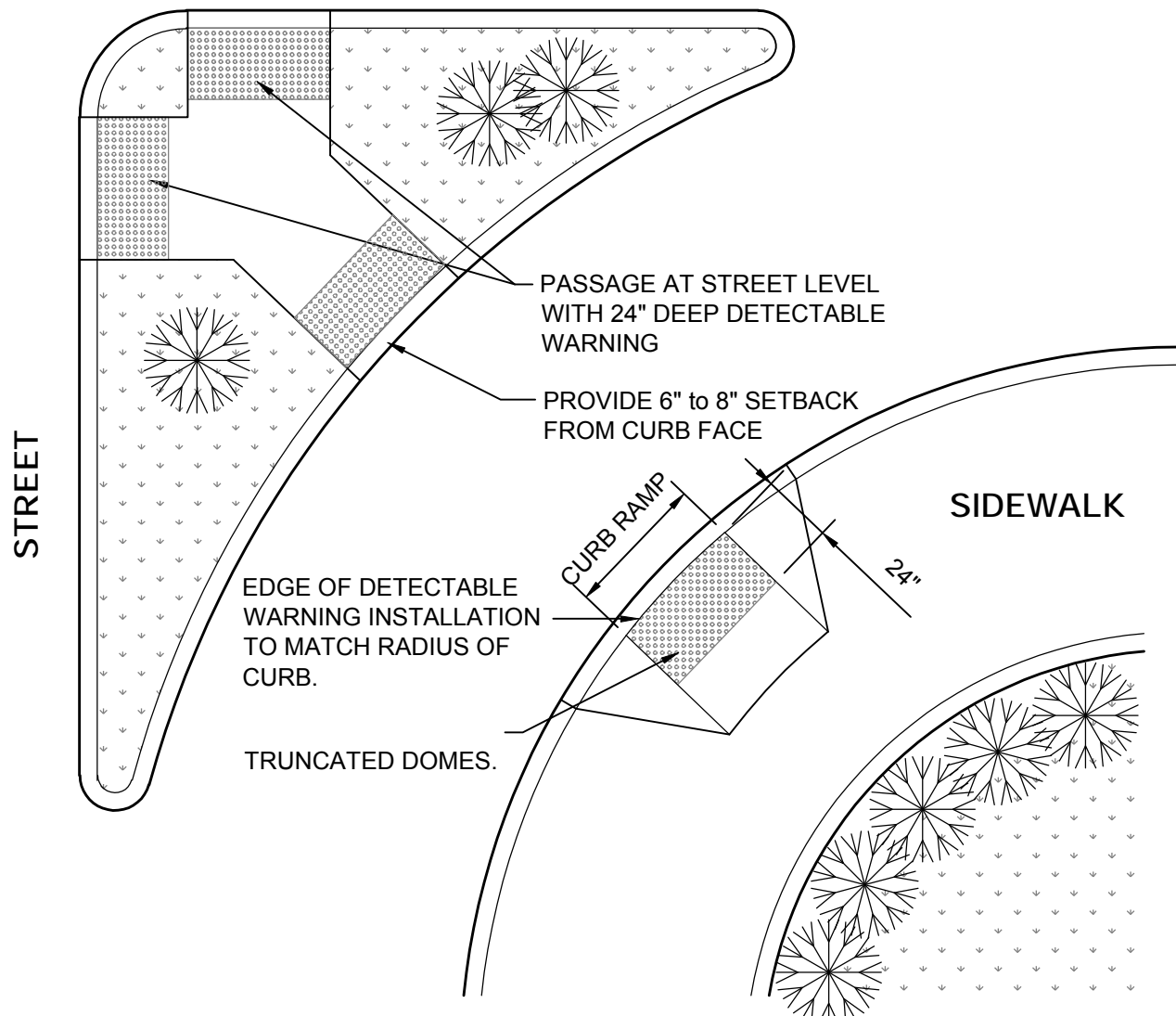
**TRUNCATED DOME  
DETECTABLE  
WARNING DETAIL**

DETECTABLE WARNINGS SHALL BE PLACED NO CLOSER THAN THE CLOSEST EDGE OF THE "DYNAMIC ENVELOPE" (GENERALLY CONSIDERED TO BE NO CLOSER THAN 3 FEET SETBACK FROM KNOWN PROTRUSIONS OF THE RAIL VEHICLE OR DEVICE). IF ENTRY TO RAIL IS GATED, DETECTABLE WARNINGS ARE TO BE PLACED ON THE NON RAIL SIDE WHENEVER POSSIBLE.

## Detectable Warnings at Railroad Crossing

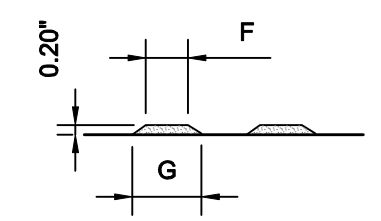
Truncated domes and all related installed surfaces to be installed according to manufacturers specifications. All detectable warning surface installations shall be at minimum, *at least* as non skid as the surrounding pedestrian surfaces.

As manufactured by Vanguard ADA Systems of America, or equivalent.  
[www.VanguardOnline.com](http://www.VanguardOnline.com)



PLAN

	MIN.	MAX.
D	1.60"	2.40"
E	.65"	1.50"
F	.45"	.80"
G	.90"	1.40"



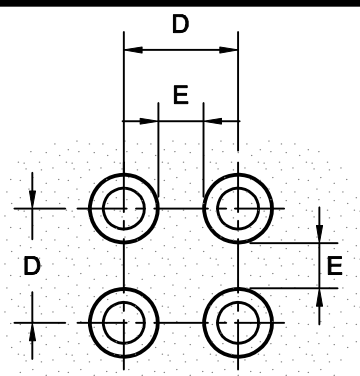
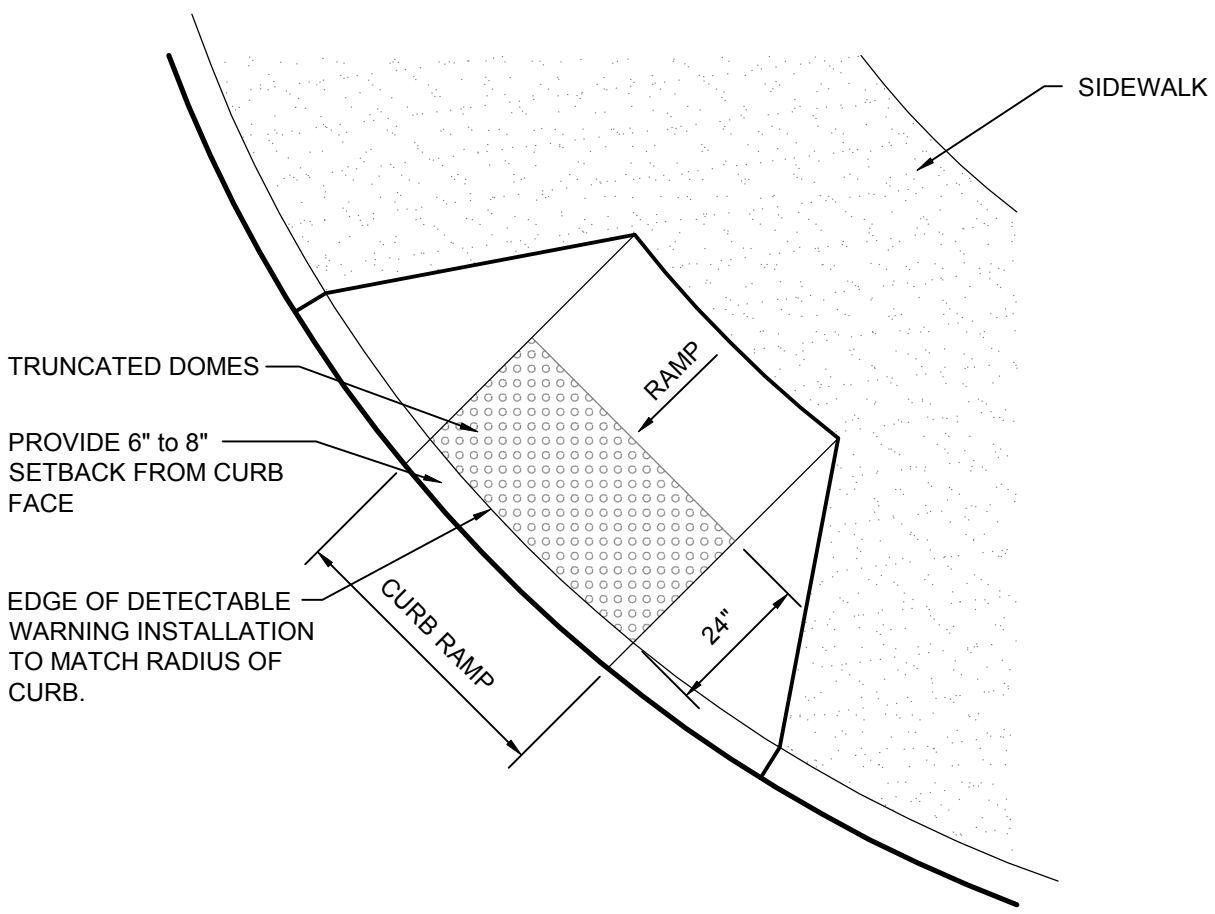
ELEVATION

**TRUNCATED DOME  
DETECTABLE  
WARNING DETAIL**

## Refuge Island with Detectable Warnings

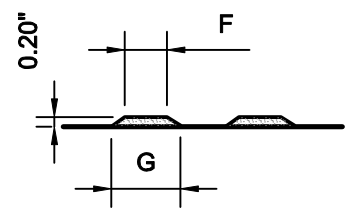
Truncated domes and all related installed surfaces to be installed according to manufacturers specifications. All detectable warning surface installations shall be at minimum, *at least* as non skid as the surrounding pedestrian surfaces.

As manufactured by Vanguard ADA Systems of America, or equivalent.  
[www.VanguardOnline.com](http://www.VanguardOnline.com)



PLAN

	MIN.	MAX.
D	1.60"	2.40"
E	.65"	1.50"
F	.45"	.80"
G	.90"	1.40"



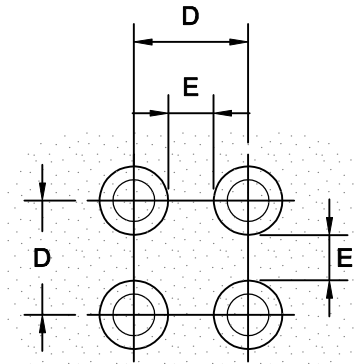
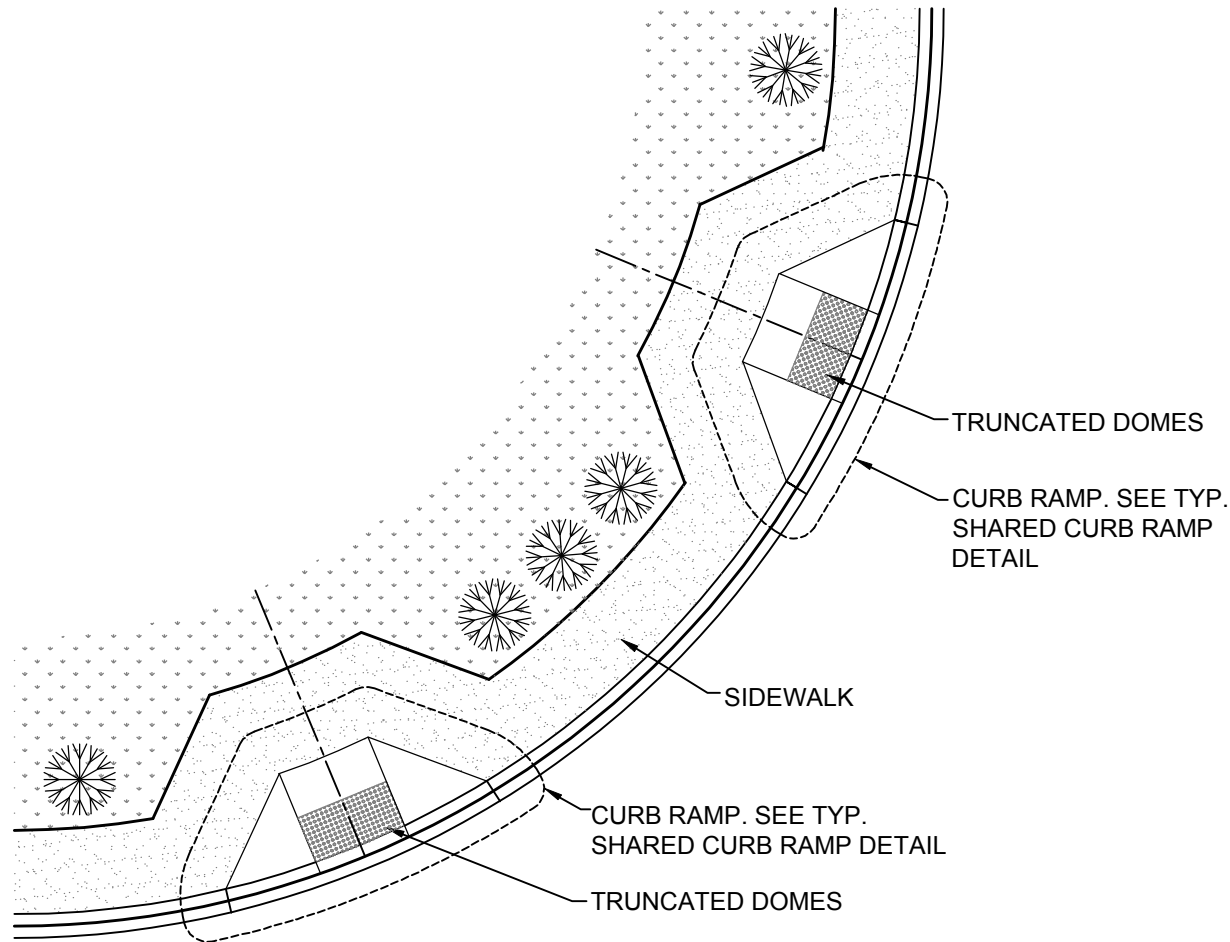
ELEVATION

TRUNCATED DOME  
DETECTABLE  
WARNING DETAIL

## Shared Curb Ramp with Detectable Warnings

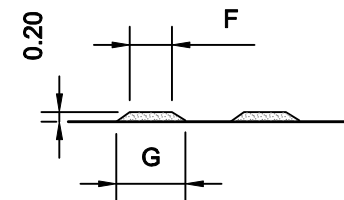
Truncated domes and all related installed surfaces to be installed according to manufacturers specifications. All detectable warning surface installations shall be at minimum, *at least* as non skid as the surrounding pedestrian surfaces.

As manufactured by Vanguard ADA Systems of America, or equivalent.  
[www.VanguardOnline.com](http://www.VanguardOnline.com)



PLAN

	MIN.	MAX.
D	1.60"	2.40"
E	.65"	1.50"
F	.45"	.80"
G	.90"	1.40"



ELEVATION

TRUNCATED DOME  
DETECTABLE  
WARNING DETAIL

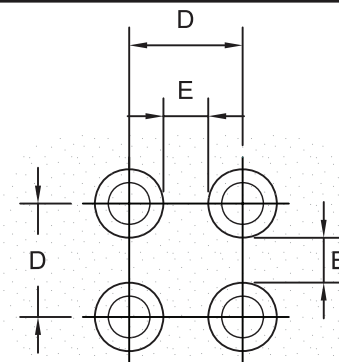
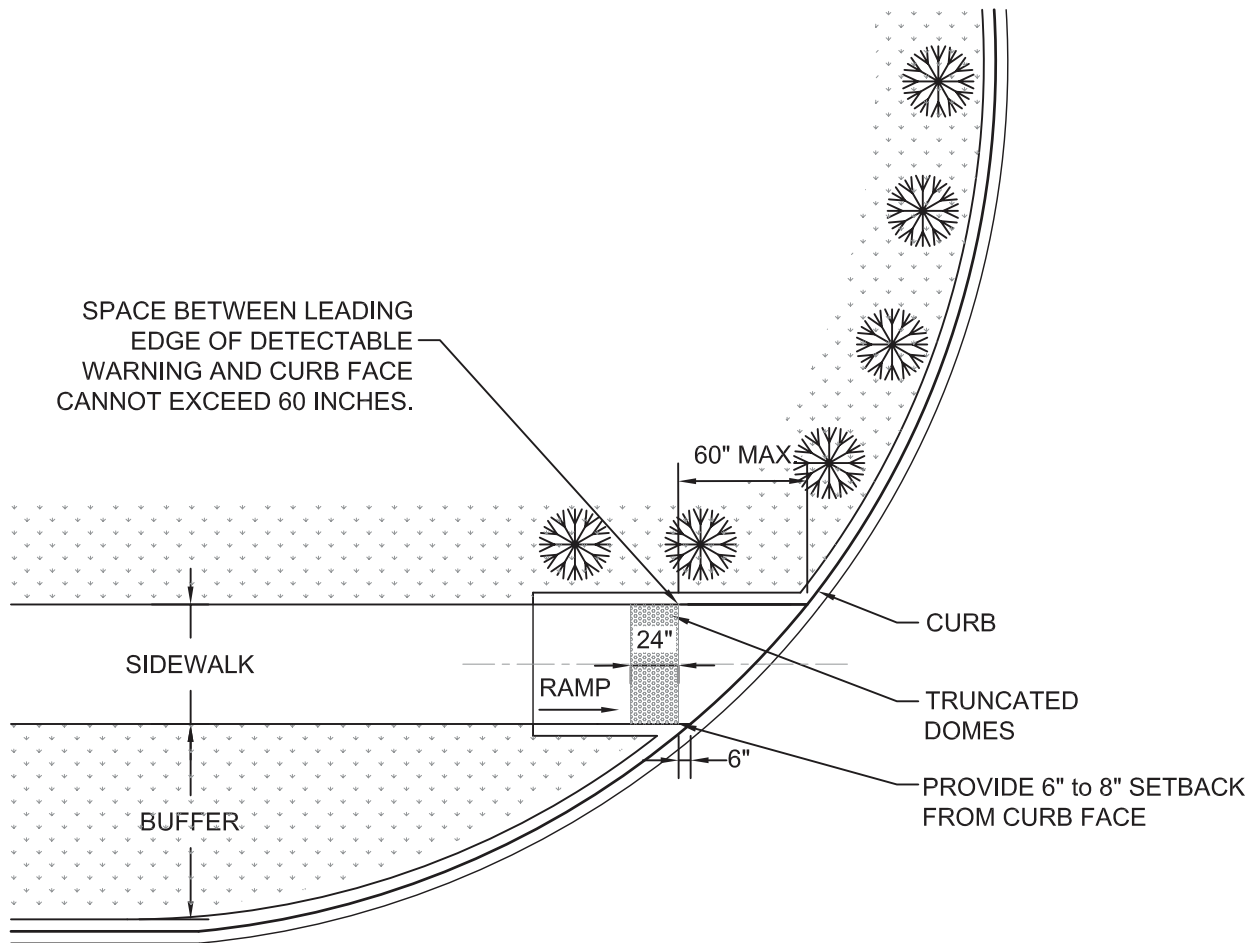
## Perpendicular Ramps on Corner with Detectable Warnings

Truncated domes and all related installed surfaces to be installed according to manufacturers specifications. All detectable warning surface installations shall be at minimum, *at least* as non skid as the surrounding pedestrian surfaces.

As manufactured by Vanguard ADA Systems of America, or equivalent.

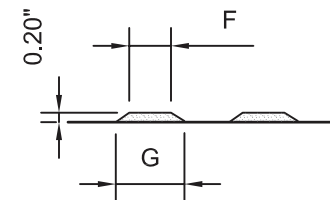
[www.VanguardOnline.com](http://www.VanguardOnline.com)

SPACE BETWEEN LEADING  
EDGE OF DETECTABLE  
WARNING AND CURB FACE  
CANNOT EXCEED 60 INCHES.



PLAN

	MIN.	MAX.
D	1.60"	2.40"
E	.65"	1.50"
F	.45"	.80"
G	.90"	1.40"



ELEVATION

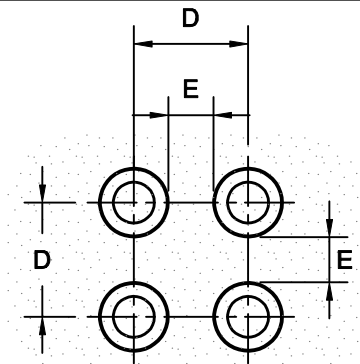
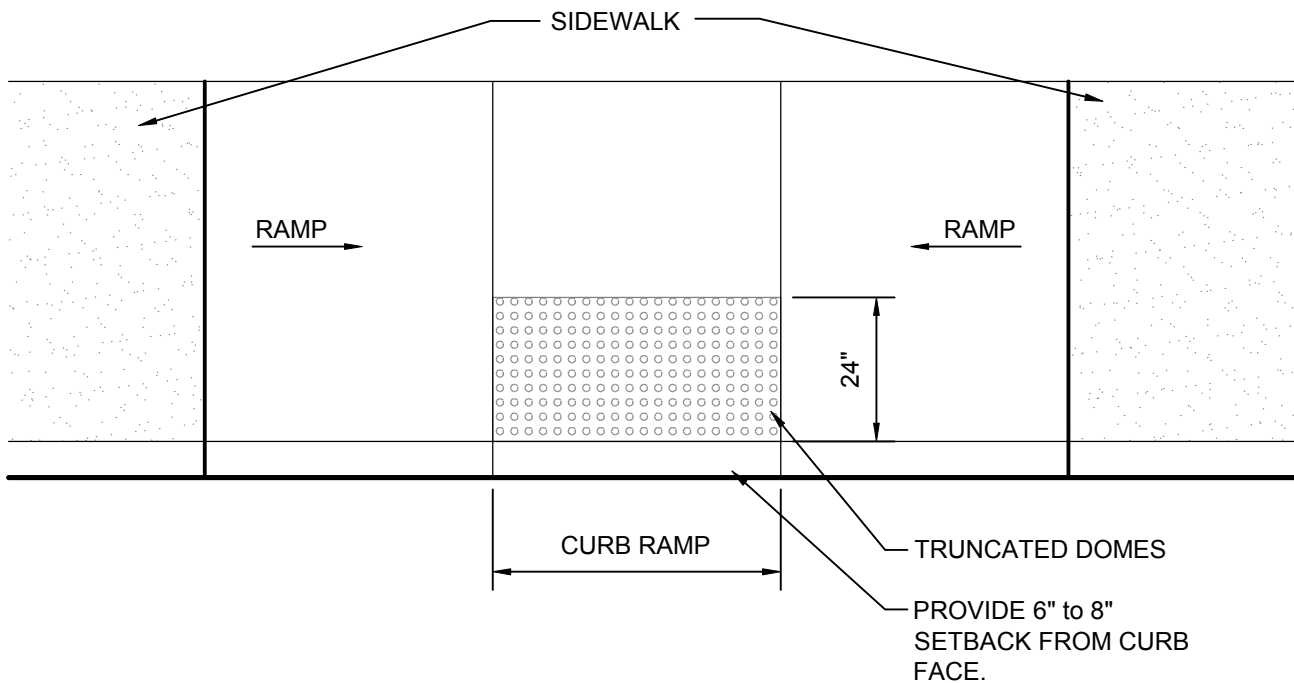
TRUNCATED DOME  
DETECTABLE  
WARNING DETAIL

## Sidewalk Ramp with Detectable Warnings

Truncated domes and all related installed surfaces to be installed according to manufacturers specifications. All detectable warning surface installations shall be at minimum, *at least* as non skid as the surrounding pedestrian surfaces.

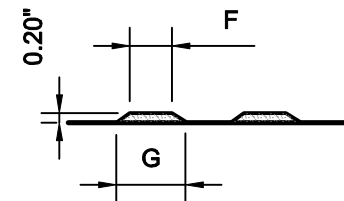
As manufactured by Vanguard ADA Systems of America, or equivalent.  
[www.VanguardOnline.com](http://www.VanguardOnline.com)





PLAN

	MIN.	MAX.
D	1.60"	2.40"
E	.65"	1.50"
F	.45"	.80"
G	.90"	1.40"



ELEVATION

TRUNCATED DOME  
DETECTABLE  
WARNING DETAIL

## Transition Ramp with Detectable Warnings

Truncated domes and all related installed surfaces to be installed according to manufacturers specifications. All detectable warning surface installations shall be at minimum, *at least* as non skid as the surrounding pedestrian surfaces.

As manufactured by Vanguard ADA Systems of America, or equivalent.  
[www.VanguardOnline.com](http://www.VanguardOnline.com)