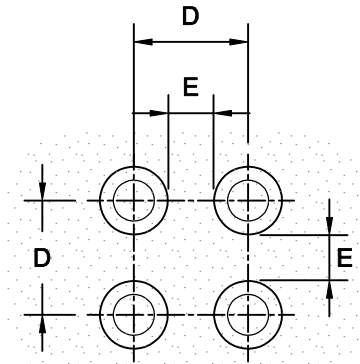


PROVIDE 6" to 8"
SETBACK FROM
CURB FACE.

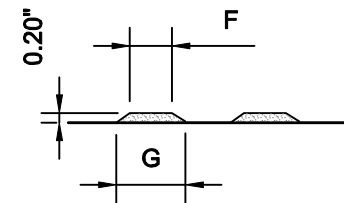
TRUNCATED DOMES

EDGE OF DETECTABLE WARNING
INSTALLATION TO MATCH RADIUS
OF CURB.



PLAN

	MIN.	MAX.
D	1.60"	2.40"
E	.65"	1.50"
F	.45"	.80"
G	.90"	1.40"



ELEVATION

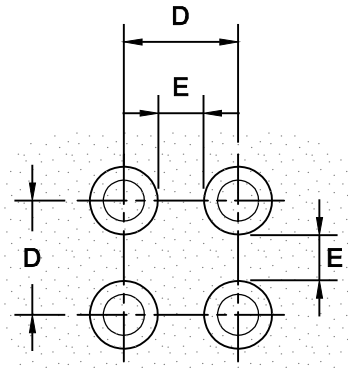
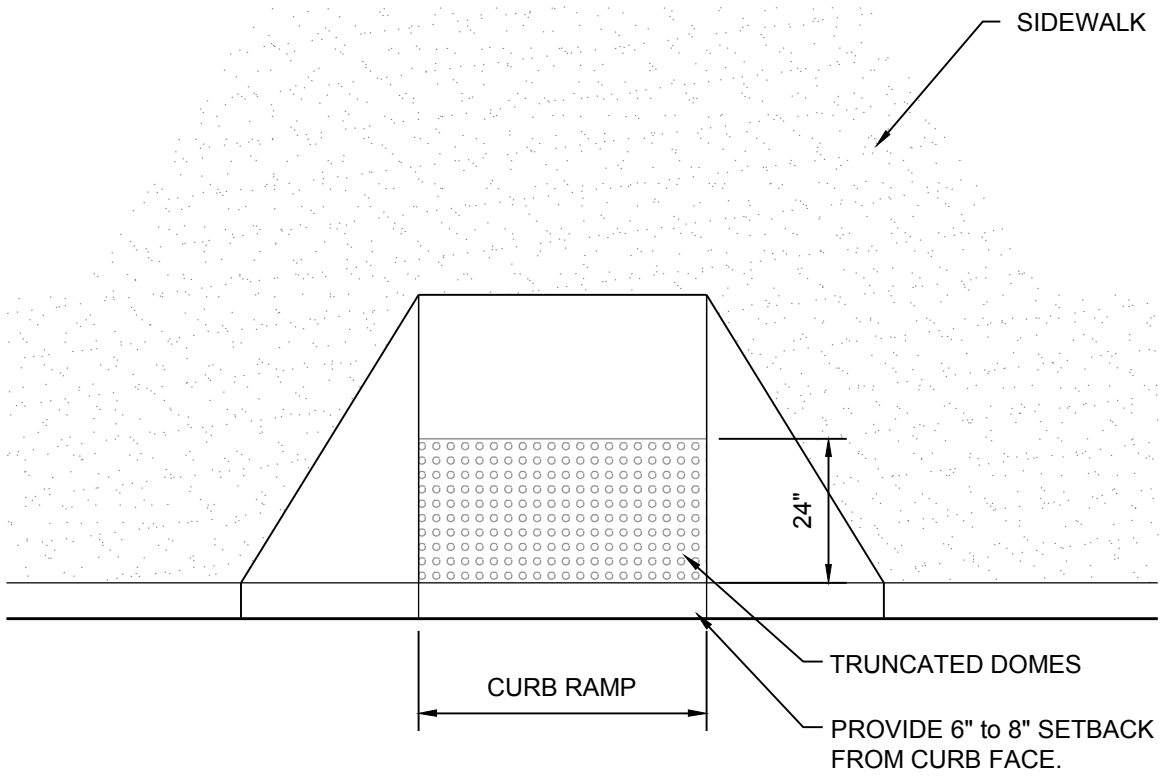
TRUNCATED DOME
DETECTABLE
WARNING DETAIL

Detectable Warning at Blended Curb

Truncated domes and all related installed surfaces to be installed according to manufacturers specifications. All detectable warning surface installations shall be at minimum, *at least* as non skid as the surrounding pedestrian surfaces.

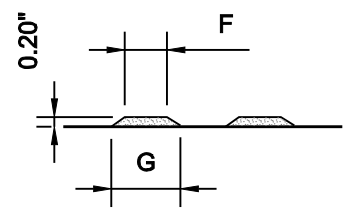
As manufactured by Vanguard ADA Systems of America, or equivalent.

www.VanguardOnline.com



PLAN

	MIN.	MAX.
D	1.60"	2.40"
E	.65"	1.50"
F	.45"	.80"
G	.90"	1.40"



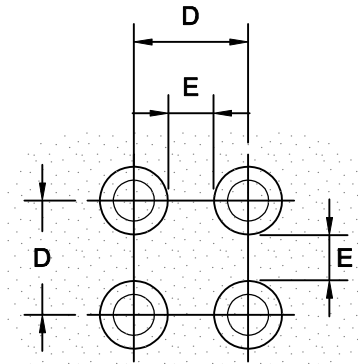
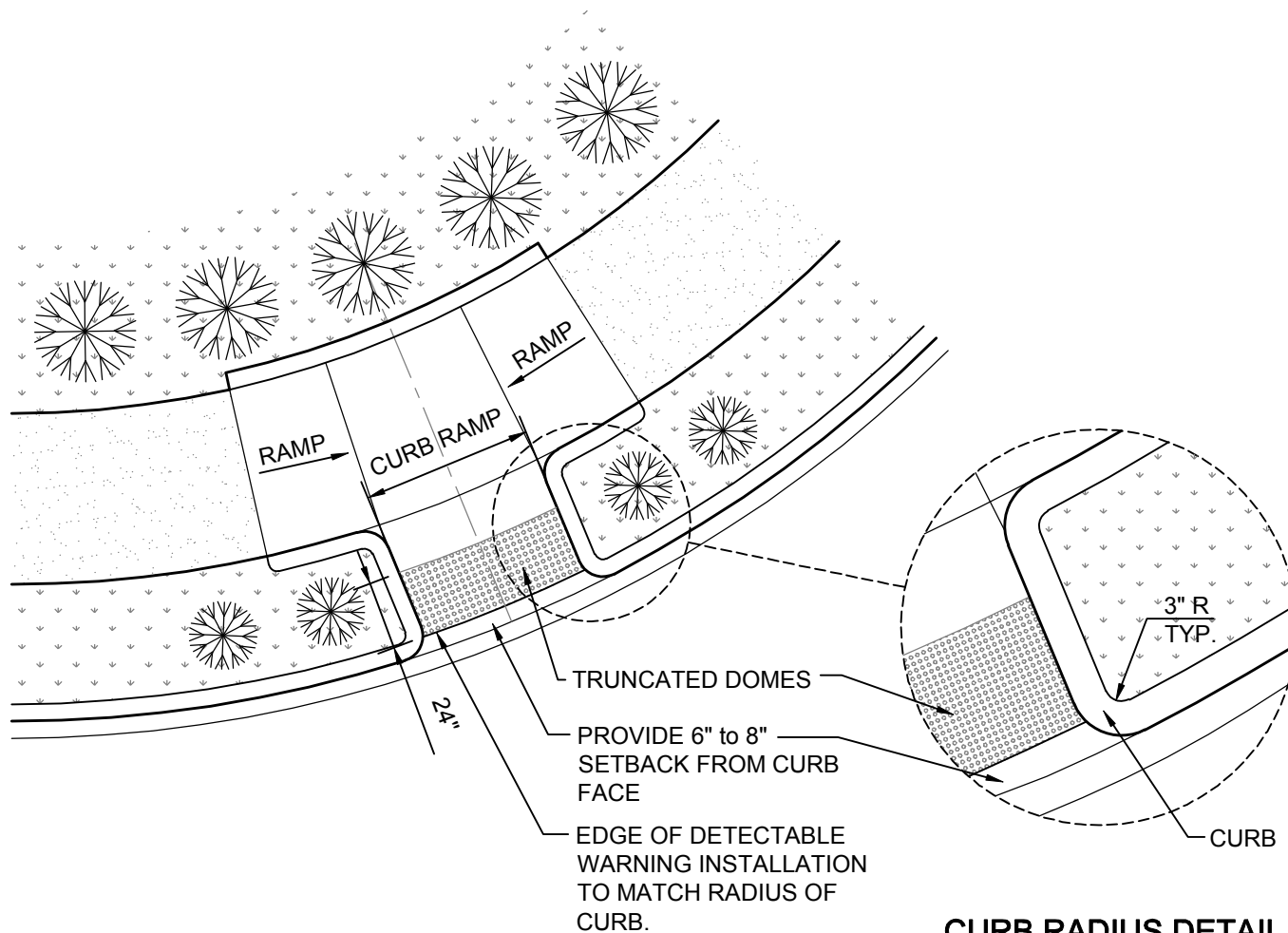
ELEVATION

**TRUNCATED DOME
DETECTABLE
WARNING DETAIL**

Detectable Warning at Curb Ramp

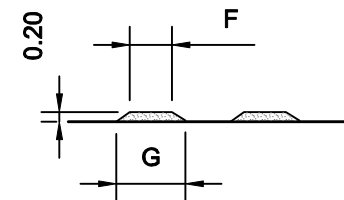
Truncated domes and all related installed surfaces to be installed according to manufacturers specifications. All detectable warning surface installations shall be at minimum, *at least* as non skid as the surrounding pedestrian surfaces.

As manufactured by Vanguard ADA Systems of America, or equivalent.
www.VanguardOnline.com



PLAN

	MIN.	MAX.
D	1.60"	2.40"
E	.65"	1.50"
F	.45"	.80"
G	.90"	1.40"



ELEVATION

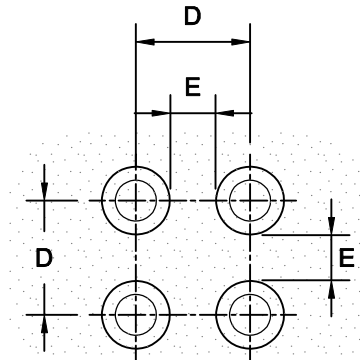
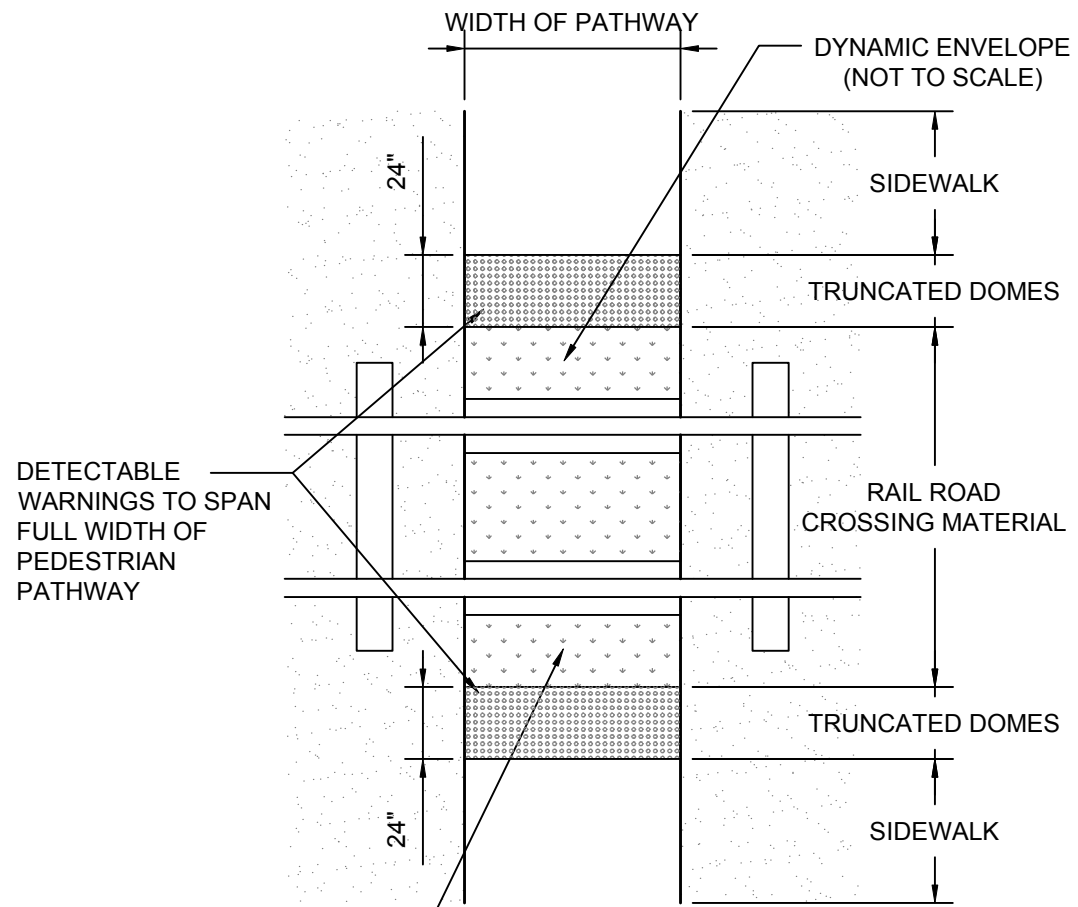
TRUNCATED DOME
DETECTABLE
WARNING DETAIL

CURB RADIUS DETAIL

Curb Ramp with Detectable Warnings

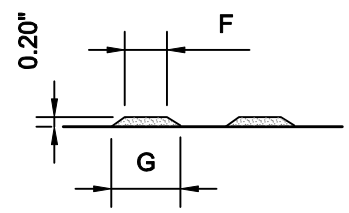
Truncated domes and all related installed surfaces to be installed according to manufacturers specifications. All detectable warning surface installations shall be at minimum, *at least* as non skid as the surrounding pedestrian surfaces.

As manufactured by Vanguard ADA Systems of America, or equivalent.
www.VanguardOnline.com



PLAN

	MIN.	MAX.
D	1.60"	2.40"
E	.65"	1.50"
F	.45"	.80"
G	.90"	1.40"



ELEVATION

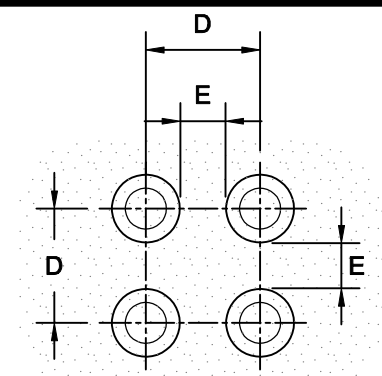
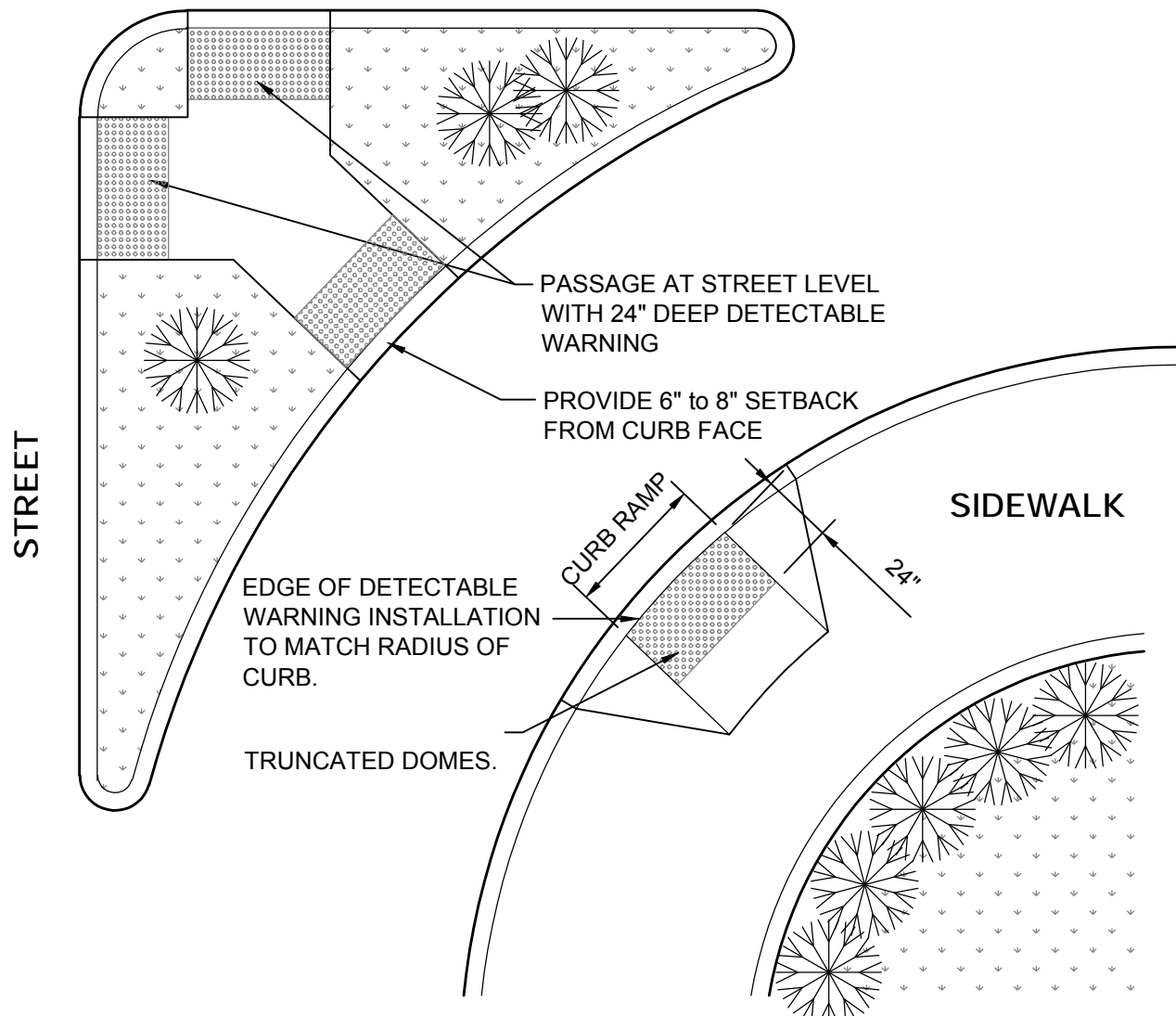
**TRUNCATED DOME
DETECTABLE
WARNING DETAIL**

DETECTABLE WARNINGS SHALL BE PLACED NO CLOSER THAN THE CLOSEST EDGE OF THE "DYNAMIC ENVELOPE" (GENERALLY CONSIDERED TO BE NO CLOSER THAN 3 FEET SETBACK FROM KNOWN PROTRUSIONS OF THE RAIL VEHICLE OR DEVICE). IF ENTRY TO RAIL IS GATED, DETECTABLE WARNINGS ARE TO BE PLACED ON THE NON RAIL SIDE WHENEVER POSSIBLE.

Detectable Warnings at Railroad Crossing

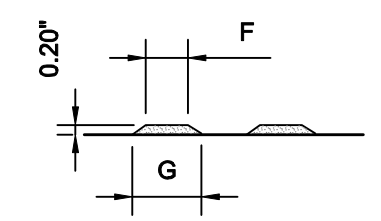
Truncated domes and all related installed surfaces to be installed according to manufacturers specifications. All detectable warning surface installations shall be at minimum, *at least* as non skid as the surrounding pedestrian surfaces.

As manufactured by Vanguard ADA Systems of America, or equivalent.
www.VanguardOnline.com



PLAN

	MIN.	MAX.
D	1.60"	2.40"
E	.65"	1.50"
F	.45"	.80"
G	.90"	1.40"



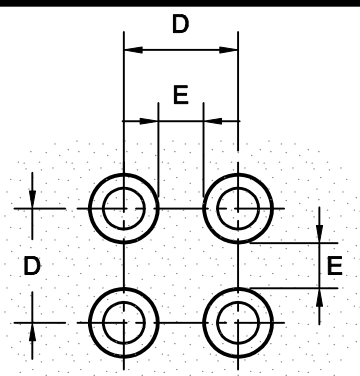
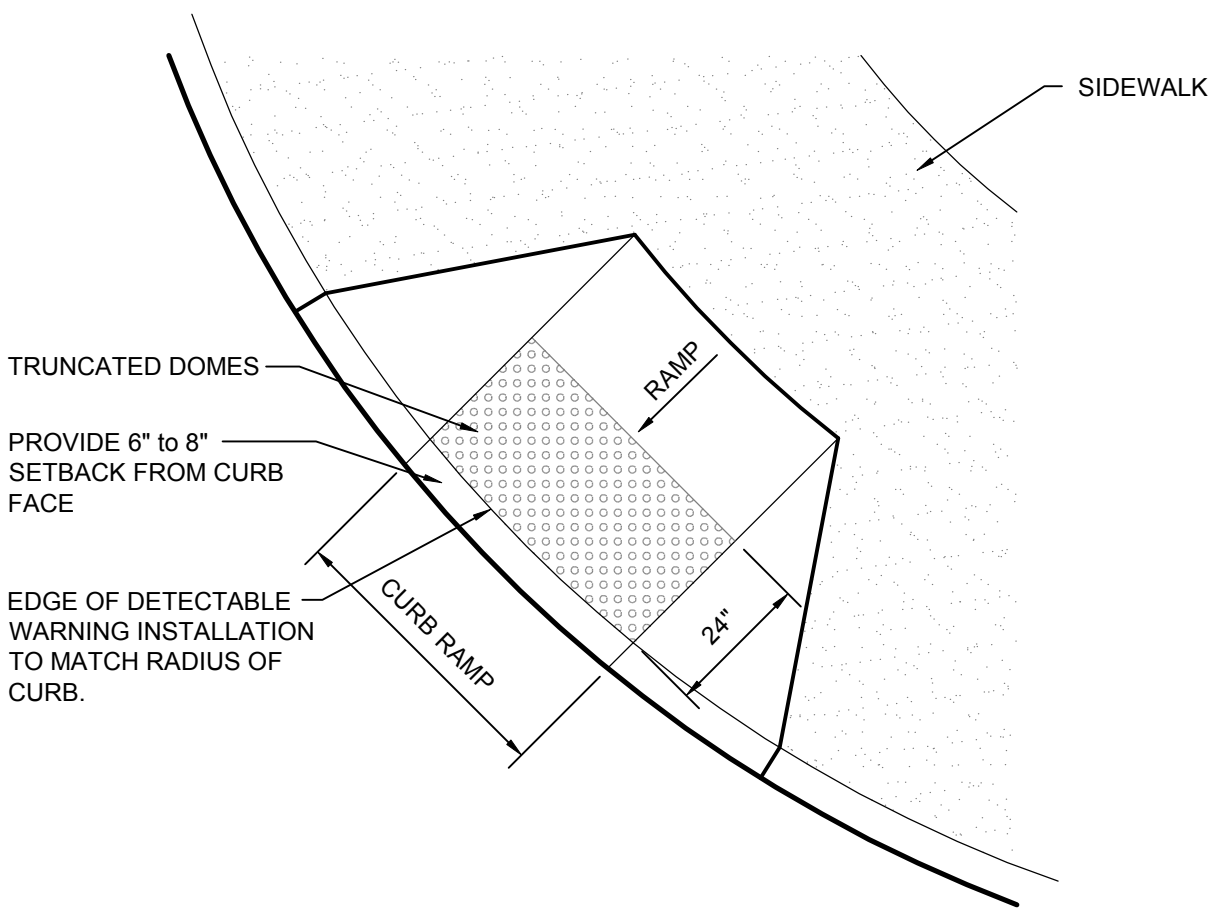
ELEVATION

**TRUNCATED DOME
DETECTABLE
WARNING DETAIL**

Refuge Island with Detectable Warnings

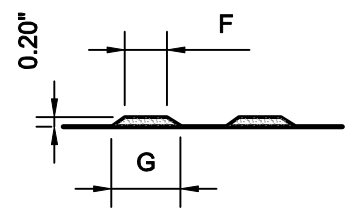
Truncated domes and all related installed surfaces to be installed according to manufacturers specifications. All detectable warning surface installations shall be at minimum, *at least* as non skid as the surrounding pedestrian surfaces.

As manufactured by Vanguard ADA Systems of America, or equivalent.
www.VanguardOnline.com



PLAN

	MIN.	MAX.
D	1.60"	2.40"
E	.65"	1.50"
F	.45"	.80"
G	.90"	1.40"



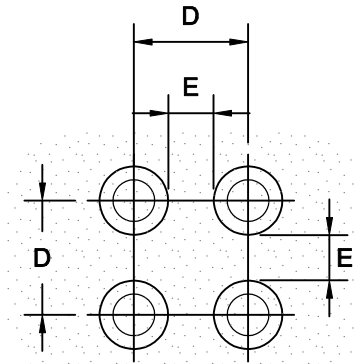
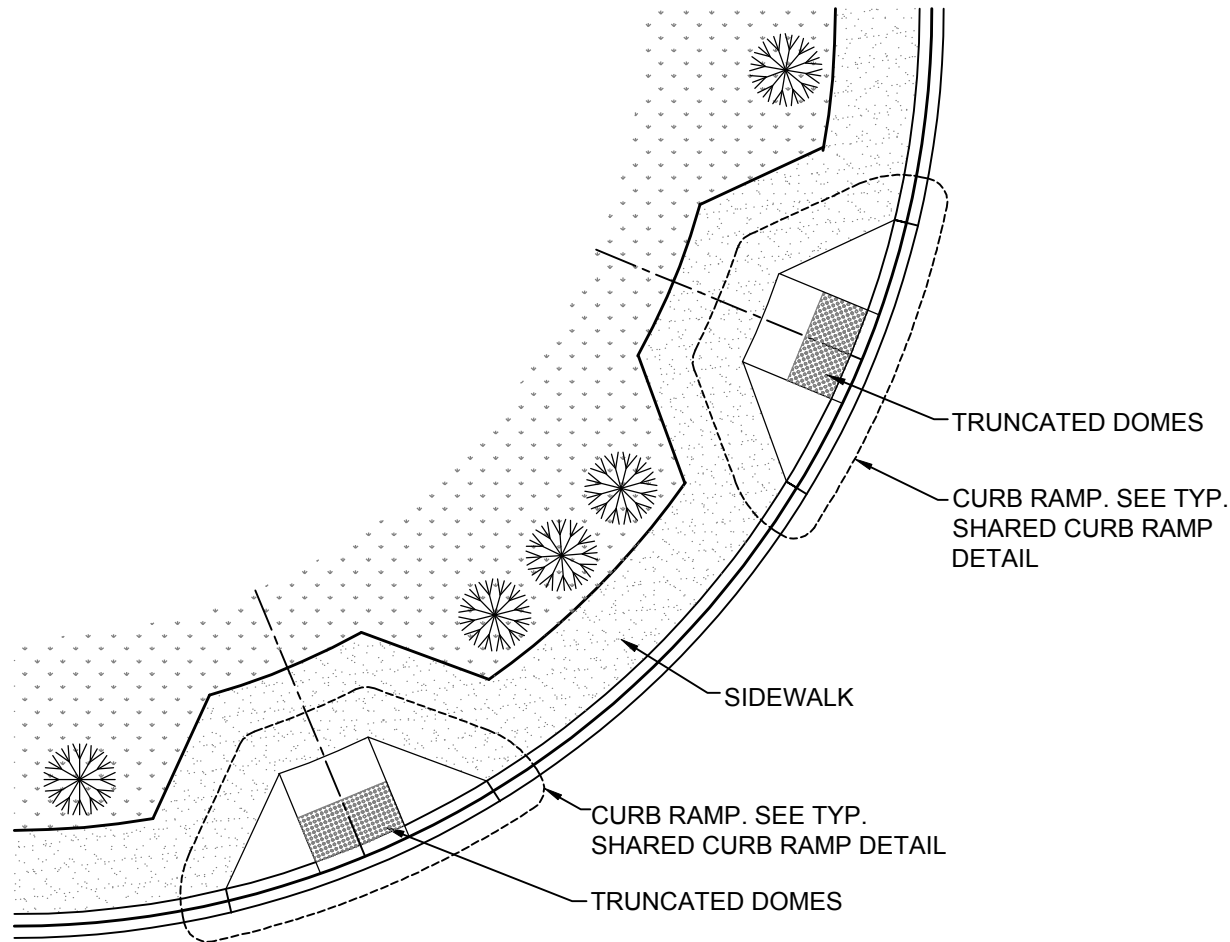
ELEVATION

TRUNCATED DOME
DETECTABLE
WARNING DETAIL

Shared Curb Ramp with Detectable Warnings

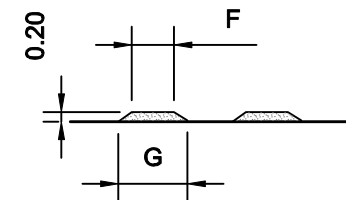
Truncated domes and all related installed surfaces to be installed according to manufacturers specifications. All detectable warning surface installations shall be at minimum, *at least* as non skid as the surrounding pedestrian surfaces.

As manufactured by Vanguard ADA Systems of America, or equivalent.
www.VanguardOnline.com



PLAN

	MIN.	MAX.
D	1.60"	2.40"
E	.65"	1.50"
F	.45"	.80"
G	.90"	1.40"



ELEVATION

**TRUNCATED DOME
DETECTABLE
WARNING DETAIL**

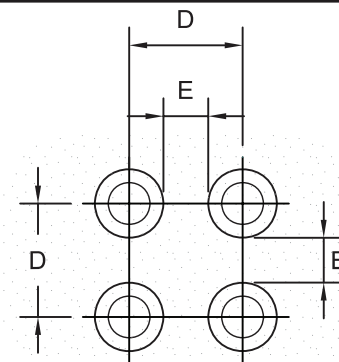
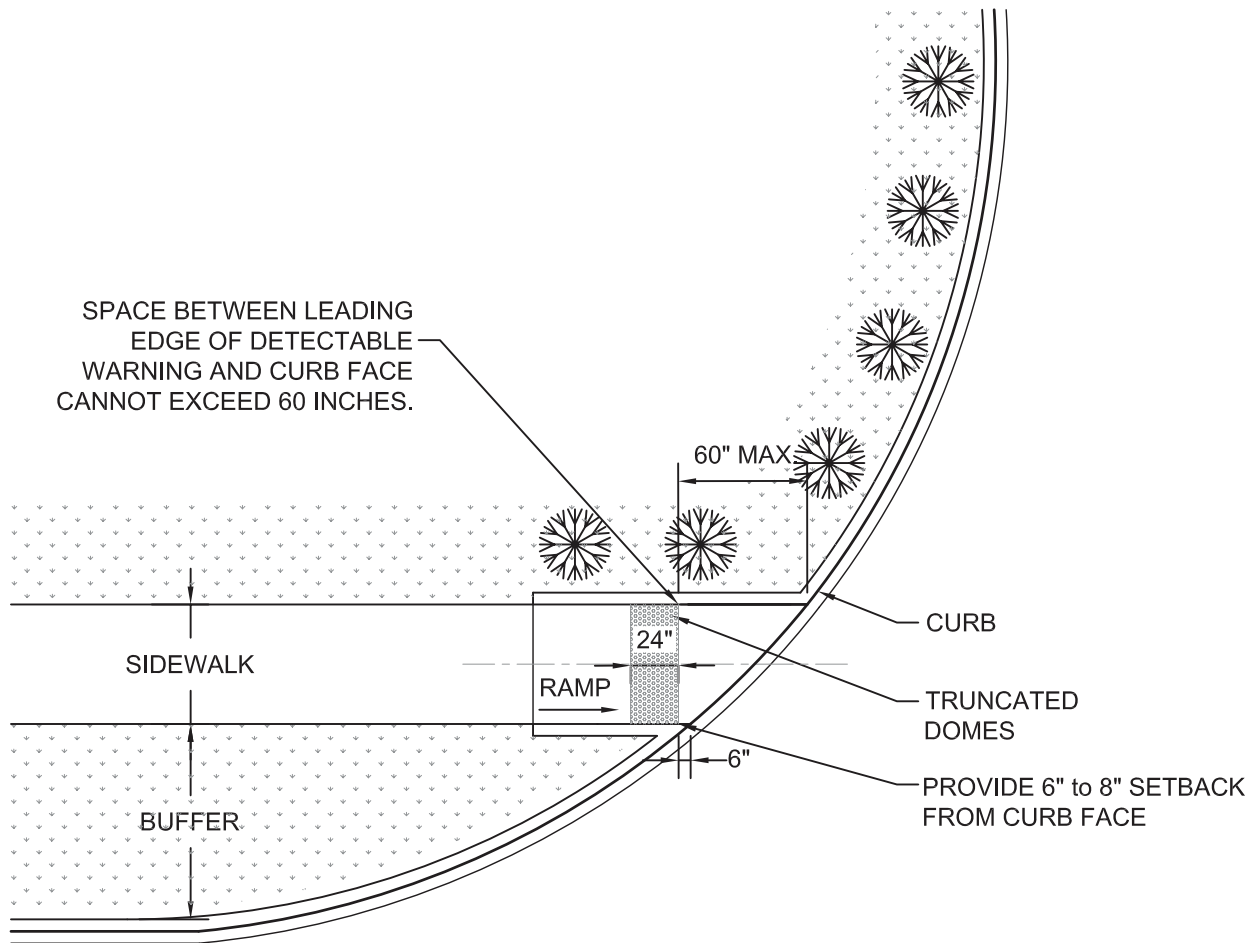
Perpendicular Ramps on Corner with Detectable Warnings

Truncated domes and all related installed surfaces to be installed according to manufacturers specifications. All detectable warning surface installations shall be at minimum, *at least* as non skid as the surrounding pedestrian surfaces.

As manufactured by Vanguard ADA Systems of America, or equivalent.

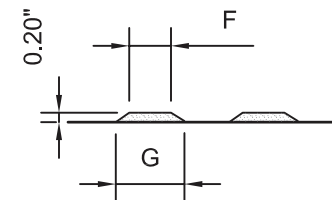
www.VanguardOnline.com

SPACE BETWEEN LEADING
EDGE OF DETECTABLE
WARNING AND CURB FACE
CANNOT EXCEED 60 INCHES.



PLAN

	MIN.	MAX.
D	1.60"	2.40"
E	.65"	1.50"
F	.45"	.80"
G	.90"	1.40"



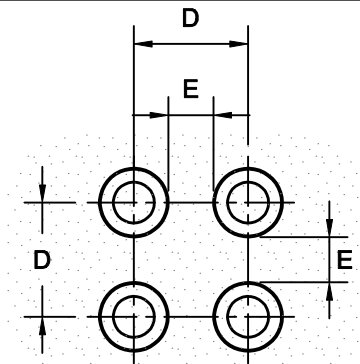
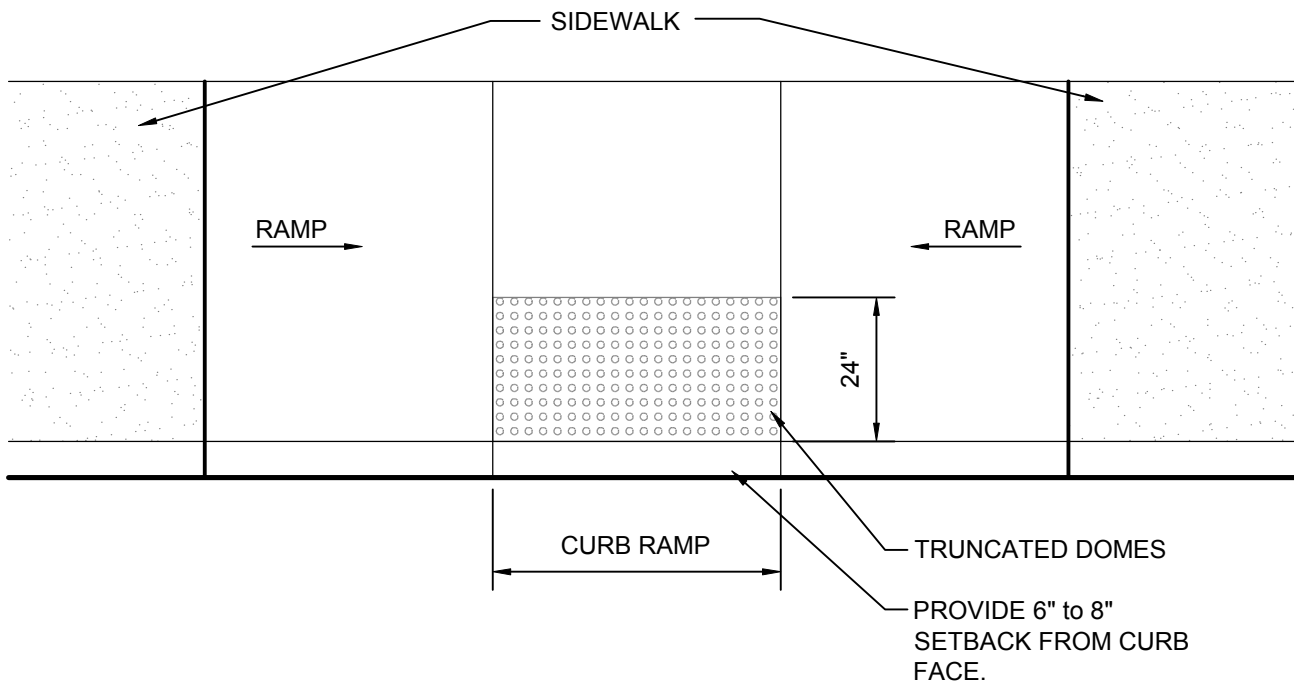
ELEVATION

TRUNCATED DOME
DETECTABLE
WARNING DETAIL

Sidewalk Ramp with Detectable Warnings

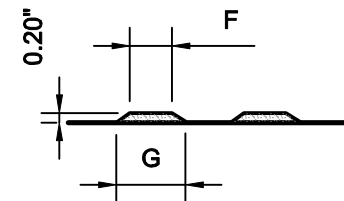
Truncated domes and all related installed surfaces to be installed according to manufacturers specifications. All detectable warning surface installations shall be at minimum, *at least* as non skid as the surrounding pedestrian surfaces.

As manufactured by Vanguard ADA Systems of America, or equivalent.
www.VanguardOnline.com



PLAN

	MIN.	MAX.
D	1.60"	2.40"
E	.65"	1.50"
F	.45"	.80"
G	.90"	1.40"



ELEVATION

**TRUNCATED DOME
DETECTABLE
WARNING DETAIL**

Transition Ramp with Detectable Warnings

Truncated domes and all related installed surfaces to be installed according to manufacturers specifications. All detectable warning surface installations shall be at minimum, *at least* as non skid as the surrounding pedestrian surfaces.

As manufactured by Vanguard ADA Systems of America, or equivalent.

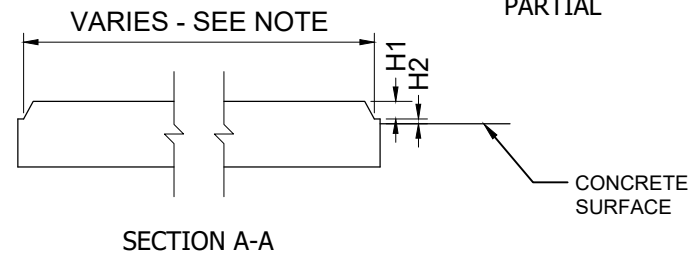
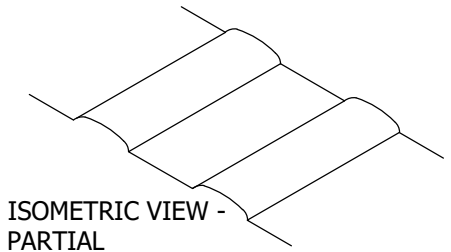
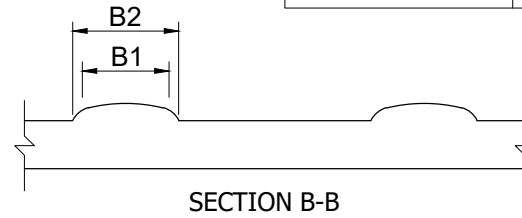
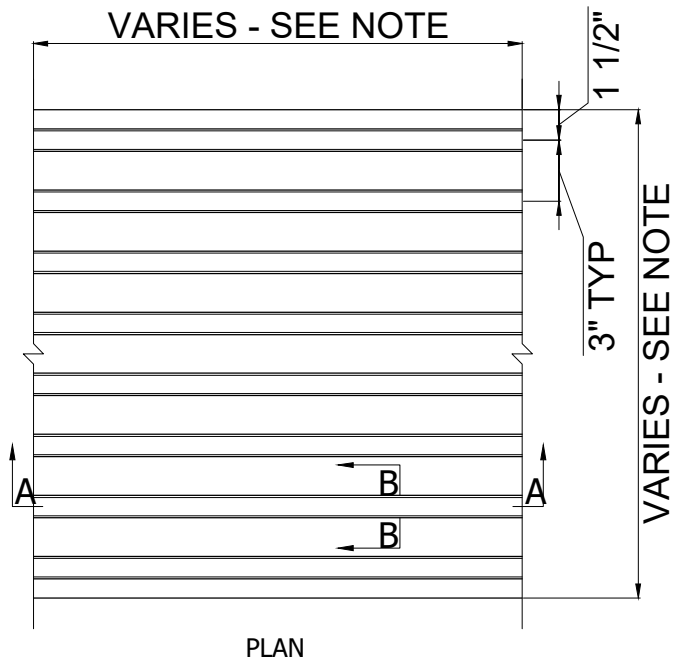
www.VanguardOnline.com



NOTE:

- Lengths are continuous based on project requirements.
- Width is per project requirements.
- GuideStrip is a non-skid product.

Dimension	Range (in.)
B1	0.90 - 1.20
B2	B1 + 0.20
H1	0.18 - 0.20
H2	0.05 Max



GuideStrip

Install as per manufacturers recommendations found at <https://vanguardonline.com>
 Manufactured by approved, trained installers